



# SANSARA

Riverfront Luxury Residences



“A Symphony  
of Craftsmanship  
and  
Curated Luxury”



Presenting

# SANSARA

Riverfront Luxury Residences

## First-of-its-kind in Howrah



17.4  
Acres

---

G+40  
Storeys

---

5  
Towers

---

3/4  
BHK Homes

---

4  
BHK + Study

---

5  
BHK Duplex

---



A perfect union of nature,  
family-centric  
spaces and community living.



It seamlessly weaves luxury with simplicity, creating a  
perfect haven for its discerning residents.  
It's not just a place to live - **it's a world of its own**,  
where exquisite residences meet state-of-the-art  
recreational facilities. Set amidst nature and designed  
to enhance your precious family time, it offers an  
unparalleled lifestyle.

Welcome  
to a world that's designed to  
celebrate life



A celebration of  
moments shared, memories made,  
and a life to be well-lived.

A black and white photograph of a woman lying on her back in a grassy field. She is wearing a light-colored long-sleeved shirt and pants, and is smiling with her head tilted back. A wicker picnic basket filled with fruit and a cloth is on the grass next to her. The background is a soft-focus landscape with trees and a body of water. The image is framed by blue wavy patterns at the top and bottom.

Experience the art of  
redefined  
resort living  
and mindful family living.

Expansive open spaces,  
adorned with lush greenery,  
enrich your living experience  
and add true value to your life.



70% open to sky      13000+ sq.ft. elevated water features      1000 ft. long riverfront boulevard



1300+ perennial trees      1 lac+ shrubs & plants      2.5 acres elevated landscape



# A World of Its Own



Discover a world where comfort, culture, and convenience intertwine seamlessly. Nestled along the serene banks of the Ganga, this haven offers a harmonious blend of nature and urban living, where every detail is designed for effortless enjoyment.

Embrace a lifestyle enriched by expansive greens, riverside tranquility, dedicated spaces for children and the elderly, world-class sporting facilities, high-street retail, and indulgent luxuries. All of these elements are seamlessly woven together to create a self-contained sanctuary where every moment finds its perfect place.



# A Neighborhood Mall for Everyday Living



A vibrant hub for everything from daily necessities to leisurely indulgences.

Supermarket & Fresh Produce Store

Pharmacy, ATMs & Convenience Stores Restaurants & Cafés

Luxury Brand Apparel Stores

Home Décor, Electronics & Utility Stores

Entertainment Center for Families & Kids



# A Riverfront Sanctuary for the Soul



Where spirituality, nature, and tradition come together in perfect harmony.

A grand temple space for prayer, meditation & inner peace

---

A dedicated Ganga Aarti area to experience sacred traditions

---

A serene riverfront promenade for tranquil walks and sunrise reflections

---

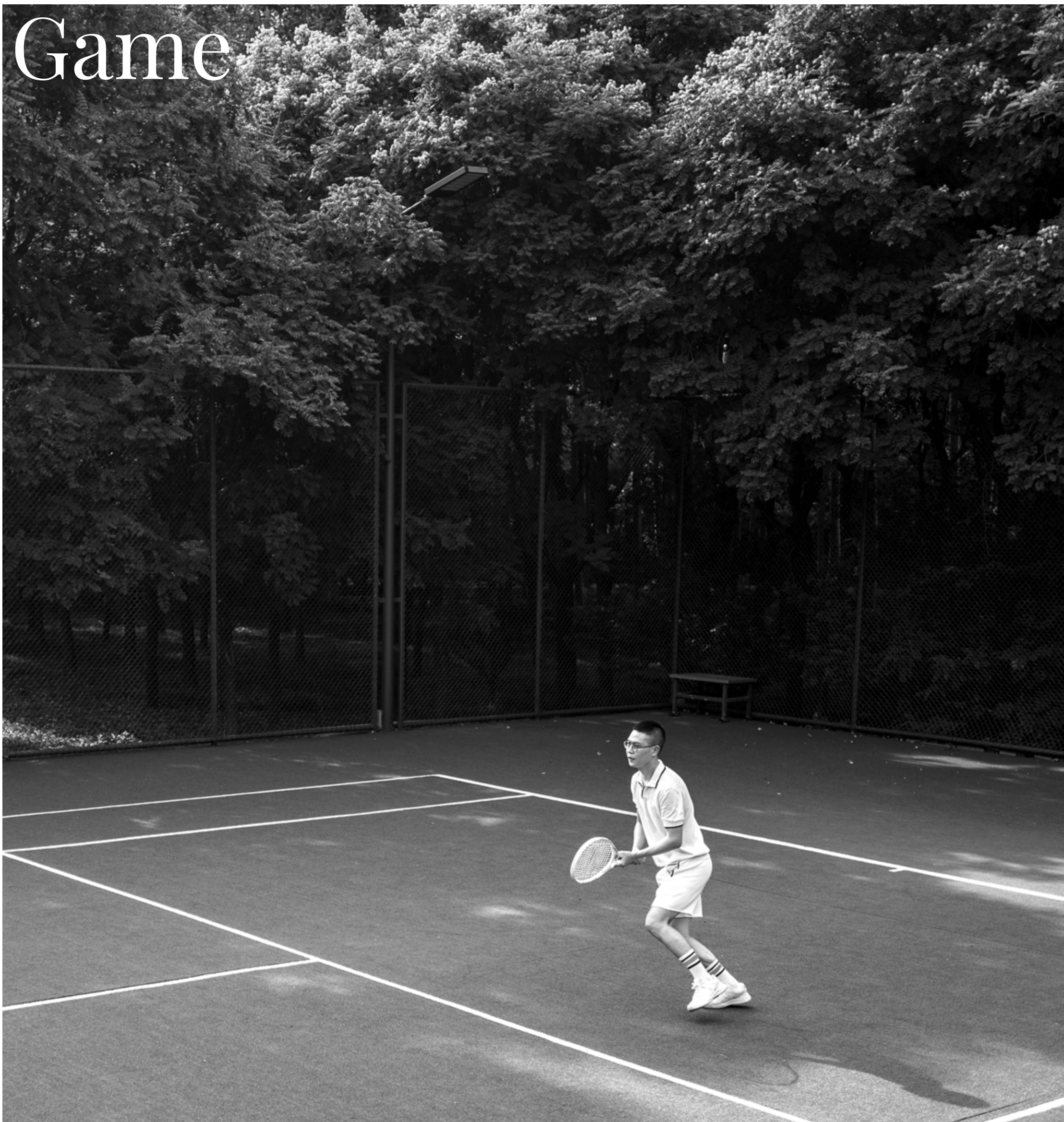
A vibrant waterfront for festivals, celebrations & a unique percussion park

---

Dock & yacht parking for leisurely riverfront experiences



# For the Love of the Game



State-of-the-art sporting arenas designed  
for champions of all ages.

Professional courts for tennis, badminton,  
pickleball, basketball & volleyball

Indoor games including table tennis, pool & board games

World-class gym & wellness centre for holistic fitness

Outdoor fitness stations & obstacle course  
for strength & endurance

Yoga lawn & meditation zone amidst serene greenery



# A Culinary Escape by the Water



Dine, unwind, and celebrate with the river as your backdrop.

---

Glasshouse seating with uninterrupted river views for a serene morning breakfast

---

Alfresco dining for a breezy, open-air experience

---

Gourmet all-day menu featuring global and local flavors

---

Private dining spaces for intimate gatherings

---

Terrace lounge—perfect for celebrations, with breathtaking sunset & skyline views

# Green Spaces

## Embracing Nature's Serenity



Green therapy, also known as eco therapy, harnesses the calming effects of nature to reduce stress and anxiety. Exposure to lush green spaces enhances mood and overall mental well-being. With this in mind, we have designed the entire project to incorporate green spaces across driveways, drop-offs, podiums, and a scenic riverfront boulevard.

# Handcrafted Spaces



Spaces thoughtfully crafted, where serenity unfolds and nature seamlessly becomes a part of your everyday life.

## Deep Connections



The lush greens surroundings are thoughtfully integrated, creating a tranquil landscape that enhances your living experience.





# Breathe in the nature's finest.

## The Meadow – Reflexology Path

A tranquil path designed for relaxation and rejuvenation.

## The Grotto – Butterfly Garden

A vibrant garden that attracts and celebrates butterflies.

## The Nest – Feature Pavilion

A charming pavilion for gatherings and relaxation.

## The Willow Grove – Herb Garden

A fragrant herb garden that nurtures the senses.

## The Ripple – Kid's Play Park

An exciting play area designed for endless fun and cognitive development.

## The Forest – Nature Trail

A serene trail that invites exploration and connection.

## Stepped Garden

A beautifully tiered garden enhancing visual appeal.

## The Orchard – Theme Garden

A garden that showcases a variety of flora.

## Garden Courtyard – Senior Recreation Area

A peaceful space designed for relaxation and socialization.

## Open Lawn

An inviting lawn for enjoying time with family and friends.





# Water Features

Find peace in  
the ripples

The color blue embodies tranquility and peace, promoting relaxation and reducing stress. This concept is woven into various wellness practices, emphasizing the profound benefits of incorporating water elements into design and architecture to enhance mental well-being. Blue therapy invites you to elevate your mood, spark creativity, and cultivate a deeper connection to nature through the serene presence of the River Ganges and thoughtfully styled water features.

# Elevate your Lifestyle



Redefined with luxurious accents, a seamless blend of comfort and sophistication.

## Not just an infinity pool



-it's infinite bliss, with breathtaking views of the Ganges.  
A rare privilege, yours to own for life.



Adorned in  
**Nature's vibrant  
palette**

A tapestry of rejuvenation beckons, where every shade invites you to explore, igniting your spirit and embracing calmness.



Not all boulevards invite the river to be your companion on morning and evening strolls. Fortune shines on those who can  
**call it home**



# Let the calm of flowing waters rejuvenate your soul.

## The River – Infinity Edge Pool

Experience breathtaking views of the River Ganges and city skyline. Surrounded by lush trees, pool beds, sunken decks, and cabanas, it's the ultimate oasis for relaxation.

## The Splash – Kids Pool

A vibrant pool with playful slides designed for children, ensuring fun splashes and joyful memories.

## The Cliff – Plunge Pool

Perfect for quick dips, this plunge pool offers a refreshing escape to unwind after a long day.

## The Lagoon – Quiet Pool

A serene sanctuary shaded by towering trees, ideal for reading, swimming, or enjoying the sounds of nature.

## The Lake – Reflective Pond

A mirror-like pond reflecting the landscape and sky, while providing a peaceful spot for contemplation.






Where meticulous design meets

timeless elegance



At SANSARA, every detail is a testament to meticulous planning and unparalleled craftsmanship. Each apartment is mindfully crafted to offer unobstructed views of the Ganges, ensuring that every day begins and ends with the serene beauty of the river. Inspired by the best in the world, this project brings together the finest elements of design, comfort, and sustainability to create a living experience that is truly one-of-a-kind. From the mindful placement of spaces to the harmonious integration of advanced technology & biodiversity, SANSARA is not just a residence; it is a carefully curated sanctuary for those who seek the finest things in life, while embracing conscious living.



Where your home  
is illuminated  
naturally, beautifully,  
and always from

The East



At SANSARA, every single apartment is East-facing, designed to capture the first rays of the sun and bathe your home in natural light all day long. This thoughtful orientation fills your living space with warmth and brightness, creating an uplifting atmosphere from dawn to dusk. Embrace a home that starts every day with the sun - designed to elevate your living experience naturally.



# LEGEND

- 29. Main Entrance
- 30. Drop-off Zone

## Health & Fitness

- 24. Yoga Lawn
- 33. Jogging Path
- 14. Outdoor Fitness Station
- 32. Bicycle Lane
- 36. Fitness Trail/Obstacle Course

## Kids

- 2. Kid's Pool
- 4. Water Slide
- 17. The Ripple (Kid's Play Park – Rock Climbing Wall, Jungle Gym, Outdoor Abacus, Sensory Garden)
- 35. Percursion Park

## Green Therapy

- 12. The Meadow (Reflexology Path)
- 13. The Grotto (Butterfly Garden)
- 9. The Nest (Feature Pavillion)
- 15. The Willow Grove (Herb Garden)
- 18. The Forest (Nature Trail)
- 19. Stepped Garden
- 23. The Orchard (Theme Garden)
- 26. Garden Courtyard (Senior Recreation Area)
- 16. Open Lawn

## Blue Therapy

- 1. The River (Infinity Edge Pool)
- 11. The Lake (Reflective Pond)
- 7. The Cliff (Plunge Pool)
- 8. The Lagoon (Quiet Pool)

## Boulevard

- 34. Ghats
- 31. Observatory Deck/Pier
- 37. Cabanas

## Podium

- 3. Parents Deck
- 6. Floating Deck
- 5. Pool Deck
- 10. Alfresco Dining
- 20. Private Garden Sitting
- 21. Event Lawn and Sculpture
- 22. Amphitheatre
- 25. Observaory with Telescope Corner
- 27. Café
- 28. Family Lounge

## Other Indoor Amenities (At Podium Level)

- Female Wellness Center
- Kids Play Room, Mini Library
- Indoor Games Room
- Multi Purpose Hall
- Library, Cards Room, Co-working Space
- Gymnasium & Yoga
- Male Wellness Center

# Designs for Every Lifestyle



Homes where modern  
convenience meets envi-  
ronmental mindfulness.

# Thoughtful Living Inside and Out

At Sansara, your home is a retreat of mindful living. Each apartment is constructed with energy-efficient materials, including system shuttering concrete walls, insulated roofing and ensuring superior thermal performance. Our commitment to sustainability is evident in every detail, from the high-efficiency pumps and motors to the GreenPro-certified fixtures that reduce water usage by up to 79%.

Sansara includes a range of advanced features designed to enhance your comfort while reducing environmental impact:

|  |  |
|--|--|
| Centralized Gas Bank Provisions                  | Ensures a safe and efficient gas supply system.                                  |
| Centralized Water Distribution System            | Provides reliable water access throughout the project.                           |
| Re-generative Elevators                          | Energy-efficient elevators that save power.                                      |
| AC Condensate Water Collection                   | AC condensate water is collected and reused through the Sewage Treatment Plant.  |
| Dual Mechanical Sewage Treatment Plant System    | A robust sewage treatment system ensuring efficient waste management.            |
| Pre-certified Platinum Rated Building            | Environmentally friendly construction with top sustainability credentials.       |
| High-tension Bulk Power Supply with Smart Meters | High-tension power supply with smart metering for precise energy usage tracking. |





# Pause to Reflect

## Disclaimer

### Crafted with Heart and Precision


This project has been crafted with immense heart and soul, where every detail, from the placement of windows to the finish of each surface, has been thoughtfully considered to create a space that not only functions beautifully but feels like home. Every corner has been designed to resonate with comfort, elegance, and the timeless charm of thoughtful planning.

### A Vision Brought to Life

This brochure is your guide to visualizing the life waiting for you here. There will be bare-shell apartments, we've created this to help you see beyond the walls—to imagine the possibilities for your interiors and how the space can effortlessly accommodate your lifestyle. We've also gone beyond 2D plans to bring the space to life in 3D, illustrating everything from furniture placement to the perfect spot for your air conditioning, lights, and electrical needs, all seamlessly integrated into the design.

### Your Trust, Our Promise

You've entrusted us with the responsibility of building your home, and we take that trust to heart. The least we can do is offer you nothing short of the best, delivering on our promise with utmost sincerity and dedication. Every aspect of this project reflects our commitment to making your home as exceptional as it deserves to be.



## Where Inspiration Meets Reality

The layouts, lighting, and even the completed bathrooms are meant to inspire, showing how functional design meets sophisticated aesthetics. While these images and suggestions offer a glimpse of what's possible, the interiors are yours to personalize. As you explore, remember that some elements—like under-cabinet storage, personal accessories, or small decorative details—are illustrative suggestions, meant to inspire your own vision.

## Preserving Structural Integrity and Design

We ensure that the unit you are booking will remain structurally sound, with no modifications permitted to core structural elements, including but not limited to wet areas. RCC walls are integral to the stability of the building and cannot be altered.

The main door, balcony, common areas and open terraces have been designed with appropriate heights and specifications to meet safety standards and enhance your living experience. No modifications to these areas will be allowed, and we kindly request that you refrain from making any changes.



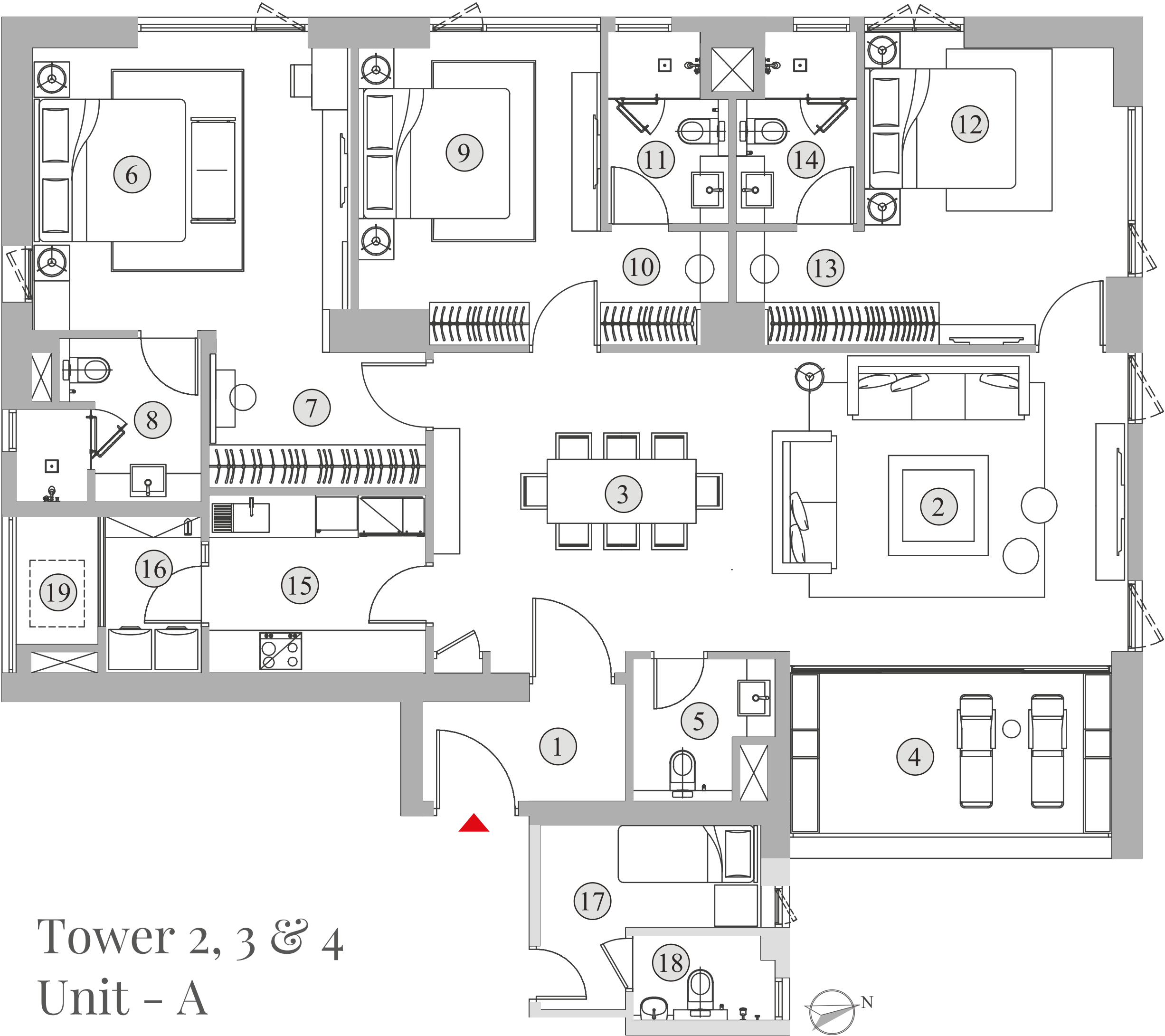
# 3 BHK

## A Type



## Homes that celebrate undisturbed connections

The 3 BHK A Type apartments embody a perfect balance between traditional Vaastu principles and seamless luxury. With 4 side-open layout with an east entry, and a Master Bedroom and Bedroom-2 in the South-West, every element has been thoughtfully designed to enhance your living experience, from the spacious foyer that welcomes you to the functional and aesthetically pleasing kitchen. All rooms and the kitchen open into the expansive central living and dining area, creating a harmonious flow that connects the space. With breathtaking views of the Ganges, this is a home where comfort, prosperity, and well-being are deeply intertwined, truly resonating with your lifestyle.



# Tower 2, 3 & 4

## Unit - A

### 3 BHK

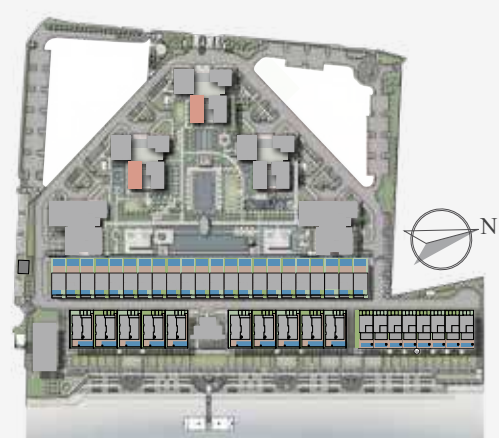
|              |             |
|--------------|-------------|
| SBUA         | 2515 sq.ft. |
| BUA          | 1965 sq.ft. |
| Carpet Area  | 1593 sq.ft. |
| Balcony Area | 161 sq.ft.  |

| No. | Space Type      | Dimensions (Ft.inch) | Area (Sq.ft) |
|-----|-----------------|----------------------|--------------|
| 1   | FOYER           | 9'4"x5'5"            | 669          |
| 2   | LIVING          | 16'10"x14'1"         |              |
| 3   | DINING          | 15'2"x14'9"          |              |
| 4   | BALCONY         | 14'10"x8'6"          |              |
| 5   | POWDER TOILET   | 6'7"x6'7"            | 316          |
| 6   | MASTER BEDROOM  | 14'8"x13'0"          |              |
| 7   | WALK-IN CLOSET  | 10'0"x6'3"           |              |
| 8   | TOILET 1        | 8'6"x7'7"            | 225          |
| 9   | BEDROOM 2       | 11'2"x14'5"          |              |
| 10  | WALK-IN CLOSET  | 5'7"x5'3"            |              |
| 11  | TOILET 2        | 5'7"x8'10"           | 237          |
| 12  | BEDROOM 3       | 12'2"x13'8"          |              |
| 13  | WALK-IN CLOSET  | 5'7"x5'3"            |              |
| 14  | TOILET 3        | 5'7"x8'10"           | 116          |
| 15  | KITCHEN         | 10'0"x8'2"           |              |
| 16  | UTILITY YARD    | 4'9"x7'3"            |              |
| 17  | HELPER'S ROOM   | 10'2"x8'6"           | 88           |
| 18  | HELPER'S TOILET | 6'7"x3'11"           |              |
| 19  | AC LEDGE        | 4'5"x5'11"           | 27           |



# 3 BHK

## C Type



## Homes that make a statement

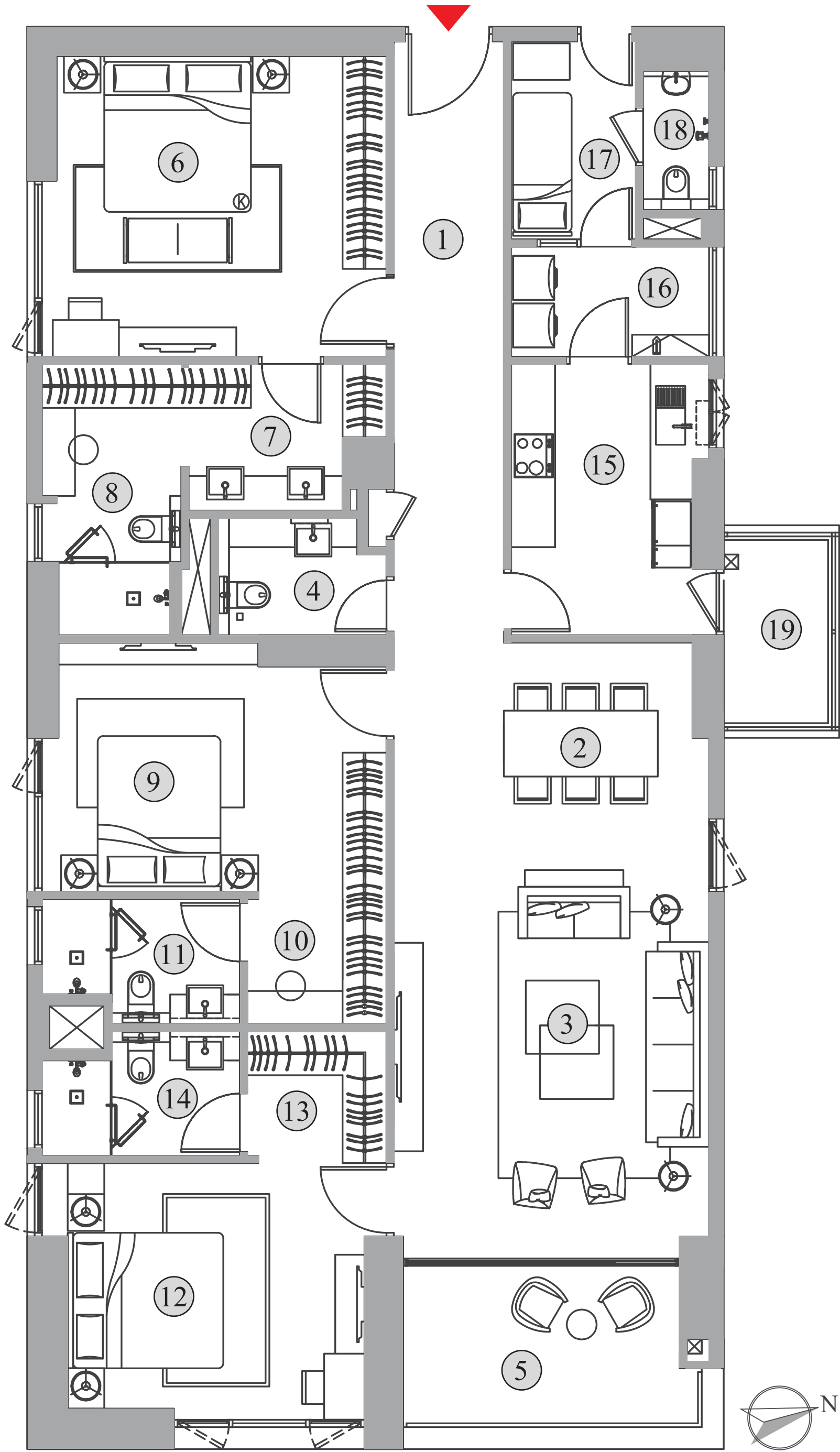
The 3 BHK C Type apartments at SANSARA blend modern amenities with timeless design, creating a statement home that exudes elegance. Maximizing natural light and ventilation, these residences feature a thoughtfully designed kitchen, tranquil bedrooms with river views, and a seamless integration of technology and tradition for a functional and beautiful living experience. A 3-side open apartment which has a West entry and a South-West master bedroom, offering openings on the North, South, and East sides for optimal natural light and ventilation.

# Tower 3 & 4

## Unit - C

### 3 BHK

|              |             |
|--------------|-------------|
| SBUA         | 2580 sq.ft. |
| BUA          | 2016 sq.ft. |
| Carpet Area  | 1634 sq.ft. |
| Balcony Area | 156 sq.ft.  |

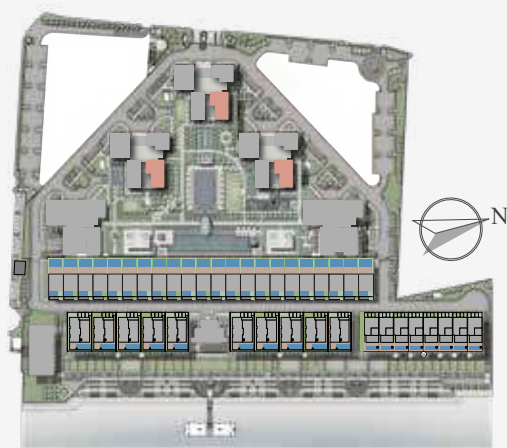


| No. | Space Type      | Dimensions (Ft.Inch) | Area (sq.ft.) |
|-----|-----------------|----------------------|---------------|
| 1   | FOYER           | 4'11"x26'7"          | 660           |
| 2   | DINING          | 14'1"x9'5"           |               |
| 3   | LIVING          | 14'1"x17'10"         |               |
| 4   | POWDER TOILET   | 7'7"x5'3"            |               |
| 5   | BALCONY         | 14'4"x8'2"           |               |
| 6   | MASTER BEDROOM  | 15'5"x13'5"          | 328           |
| 7   | WALK-IN CLOSET  | 9'2"x6'7"            |               |
| 8   | TOILET -1       | 6'3"x12'2"           |               |
| 9   | BEDROOM 2       | 15'5"x11'2"          | 243           |
| 10  | WALK-IN CLOSET  | 6'3"x5'7"            |               |
| 11  | TOILET -2       | 8'10"x5'7"           |               |
| 12  | BEDROOM 3       | 13'3"x11'6"          | 237           |
| 13  | WALK-IN CLOSET  | 6'3"x5'7"            |               |
| 14  | TOILET -3       | 8'10"x5'7"           |               |
| 15  | KITCHEN         | 8'1"x12'2"           | 149           |
| 16  | UTILITY YARD    | 9'6"x4'11"           |               |
| 17  | HELPER'S ROOM   | 5'7"x8'10"           | 68            |
| 18  | HELPER'S TOILET | 2'11"x6'3"           |               |
| 19  | AC LEDGE        | 4'11"x9'6"           | 47            |



# 4BHK

B Type



## Homes that exude royalty

The 4 BHK B Type units at SANSARA are crafted for families who value space, light, and a seamless connection between indoor and outdoor living, offering a regal retreat for discerning residents. These meticulously designed apartments provide not just a home, but a haven of elegance. With a 3-side open layout, west-facing entry for positive energy, expansive balconies, and well-ventilated rooms, the residences are perfect for families who cherish togetherness as much as they value individual space. Advanced materials and luxurious finishes elevate every moment, creating an atmosphere of sophistication and comfort that feels truly royal.

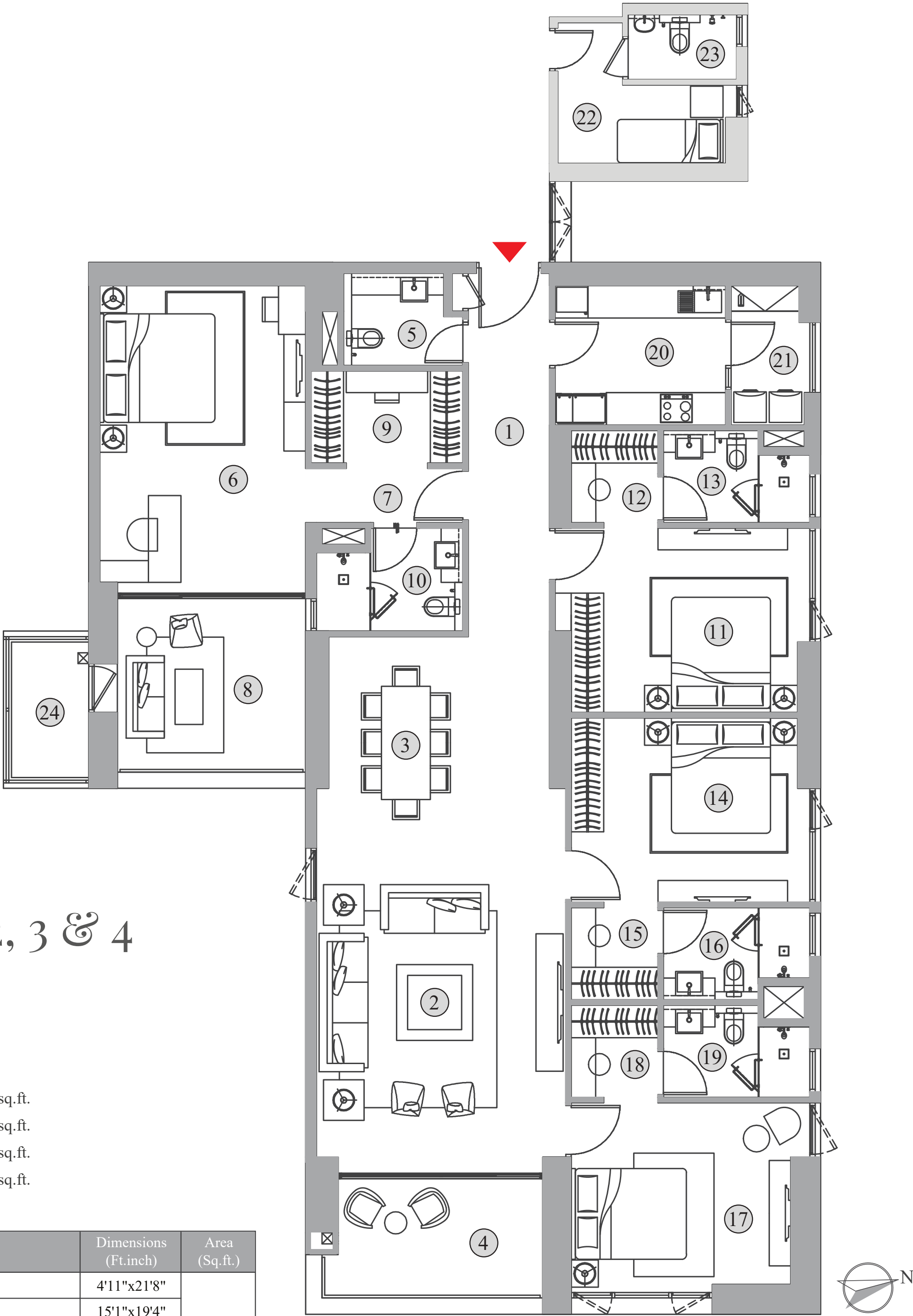
# Tower 2, 3 & 4

## Unit - B

### 4 BHK

SBUA 3272 sq.ft.  
BUA 2557 sq.ft.  
Carpet Area 1978 sq.ft.  
Balcony Area 281 sq.ft.

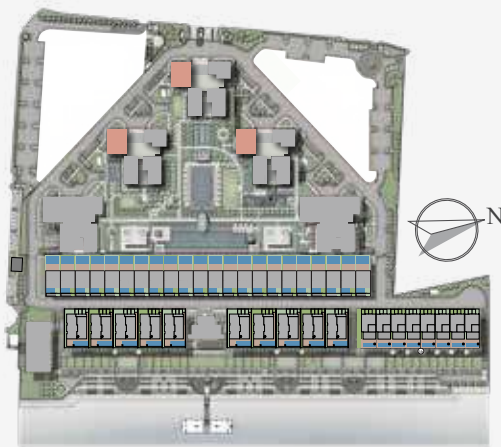
| No. | Space Type       | Dimensions (Ft.inch) | Area (Sq.ft.) |
|-----|------------------|----------------------|---------------|
| 1   | FOYER            | 4'11"x21'8"          | 722           |
| 2   | LIVING           | 15'1"x19'4"          |               |
| 3   | DINING           | 13'4"x12'10"         |               |
| 4   | BALCONY          | 14'4"x8'2"           |               |
| 5   | POWDER TOILET    | 7'3"x5'7"            | 490           |
| 6   | MASTER BEDROOM   | 12'6"x18'3"          |               |
| 7   | M. BEDROOM FOYER | 9'2"x3'3"            |               |
| 8   | BALCONY          | 11'5"x11'6"          |               |
| 9   | WALK-IN CLOSET   | 9'2"x5'7"            | 238           |
| 10  | TOILET 1         | 8'10"x6'3"           |               |
| 11  | BEDROOM 2        | 15'5"x11'2"          |               |
| 12  | WALK-IN CLOSET   | 5'3"x5'7"            | 232           |
| 13  | TOILET 2         | 8'10"x5'7"           |               |
| 14  | BEDROOM 3        | 14'5"x11'2"          |               |
| 15  | WALK-IN CLOSET   | 5'3"x5'7"            | 229           |
| 16  | TOILET 3         | 8'10"x5'7"           |               |
| 17  | BEDROOM 4        | 13'3"x11'6"          |               |
| 18  | WALK-IN CLOSET   | 5'3"x5'7"            | 128           |
| 19  | TOILET 4         | 8'10"x5'7"           |               |
| 20  | KITCHEN          | 10'4"x8'5"           |               |
| 21  | UTILITY YARD     | 4'5"x8'5"            | 90            |
| 22  | HELPER'S ROOM    | 10'2"x8'6"           |               |
| 23  | HELPER'S TOILET  | 6'7"x3'11"           | 47            |
| 24  | AC LEDGE         | 4'11"x9'6"           |               |





# 4 BHK + Study

D Type

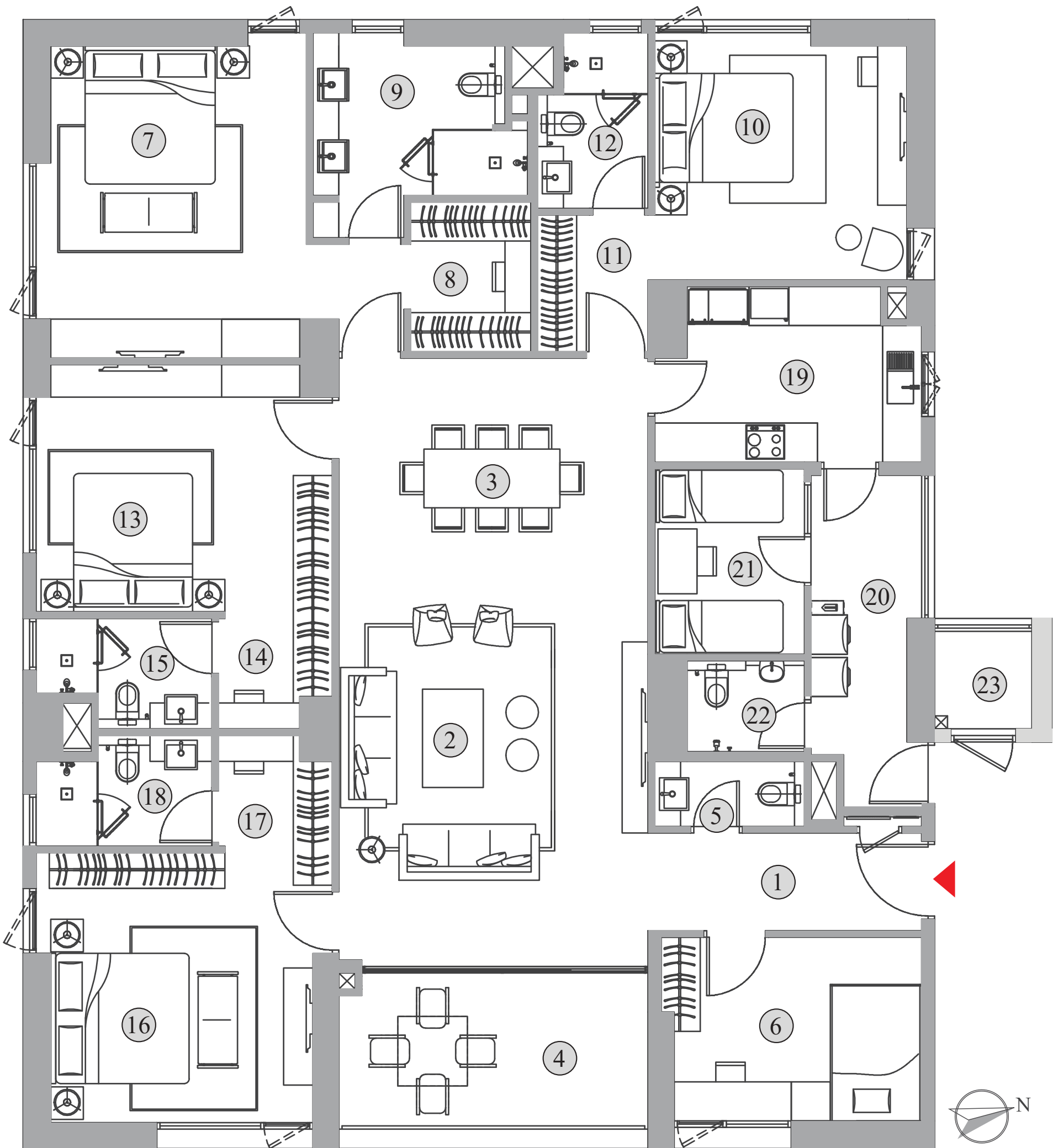


## Homes that offer unlimited expanse

The 4 BHK + Study D Type at SANSARA is a beautifully designed, expansive, Vaastu-compliant home with a North-East entry, South-West master bedroom, and North-West kitchen to promote optimal harmony and well-being. The three sides open ensure excellent ventilation and abundant natural light throughout. This residence offers spacious living areas, stunning river views, and high-quality finishes, blending luxury with functionality. Experience the perfect balance of elegance and comfort in your new home.

# Tower 2, 3 & 4 Unit - D 4 BHK + Study

SBUA                3364 sq.ft.  
BUA                2629 sq.ft.  
Carpet Area        2161 sq.ft.  
Balcony Area      226 sq.ft.

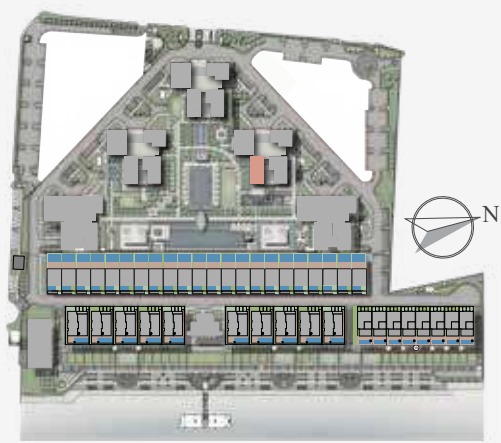


| No. | Space Type      | Dimensions<br>(Ft. Inch) | Area<br>(sq.ft) |
|-----|-----------------|--------------------------|-----------------|
| 1   | FOYER           | 13'5"x4'11"              | 703             |
| 2   | LIVING          | 15'7"x17'5"              |                 |
| 3   | DINING          | 15'7"x12'11"             |                 |
| 4   | BALCONY         | 15'7"x8'10"              |                 |
| 5   | POWDER TOILET   | 7'7"x3'3"                | 118             |
| 6   | STUDY           | 12'6"x9'3"               |                 |
| 7   | MASTER BED ROOM | 12'11"x15'9"             | 369             |
| 8   | WALK-IN CLOSET  | 6'1"x7'7"                |                 |
| 9   | TOILET 1        | 10'10"x7'7"              |                 |
| 10  | BEDROOM 2       | 12'9"x12'6"              | 239             |
| 11  | WALK-IN CLOSET  | 5'7"x6'11"               |                 |
| 12  | TOILET 2        | 5'7"x8'10"               |                 |
| 13  | BEDROOM 3       | 14'11"x12'6"             | 255             |
| 14  | WALK-IN CLOSET  | 5'9"x5'7"                |                 |
| 15  | TOILET 3        | 8'10"x5'7"               |                 |
| 16  | BEDROOM 4       | 13'2"x13'7"              | 264             |
| 17  | WALK-IN CLOSET  | 5'9"x5'7"                |                 |
| 18  | TOILET 4        | 8'10"x5'7"               |                 |
| 19  | KITCHEN         | 13'5"x8'10"              | 198             |
| 20  | UTILITY YARD    | 6'3"x16'9"               |                 |
| 21  | HELPER'S ROOM   | 7'7"x9'4"                | 98              |
| 22  | HELPER'S TOILET | 5'11"x4'7"               |                 |
| 23  | AC LEDGE        | 4'11"x5'7"               | 27              |



# 5 BHK

## Duplex C Type



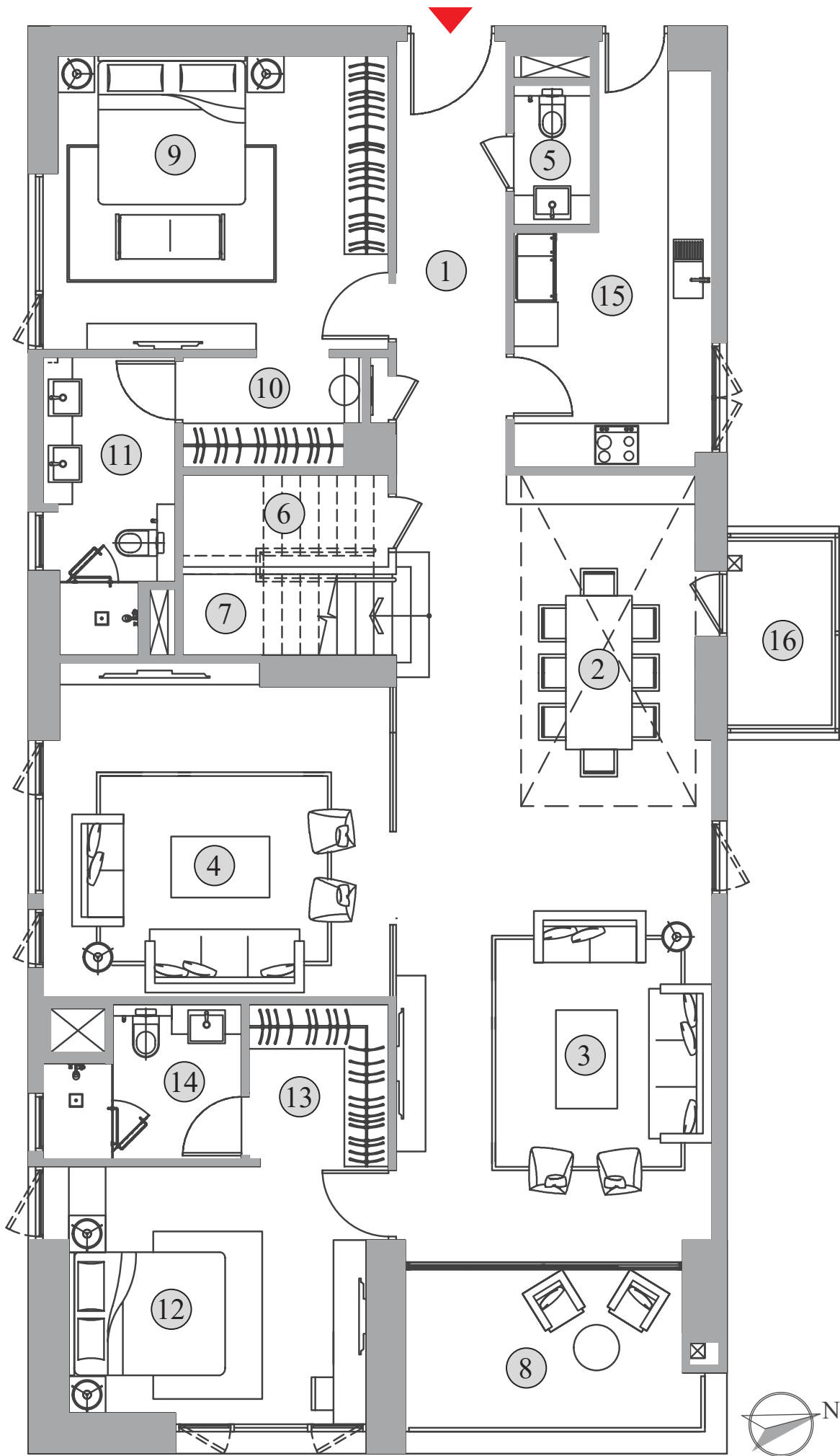
5 BHK DUPLEX (LOWER)



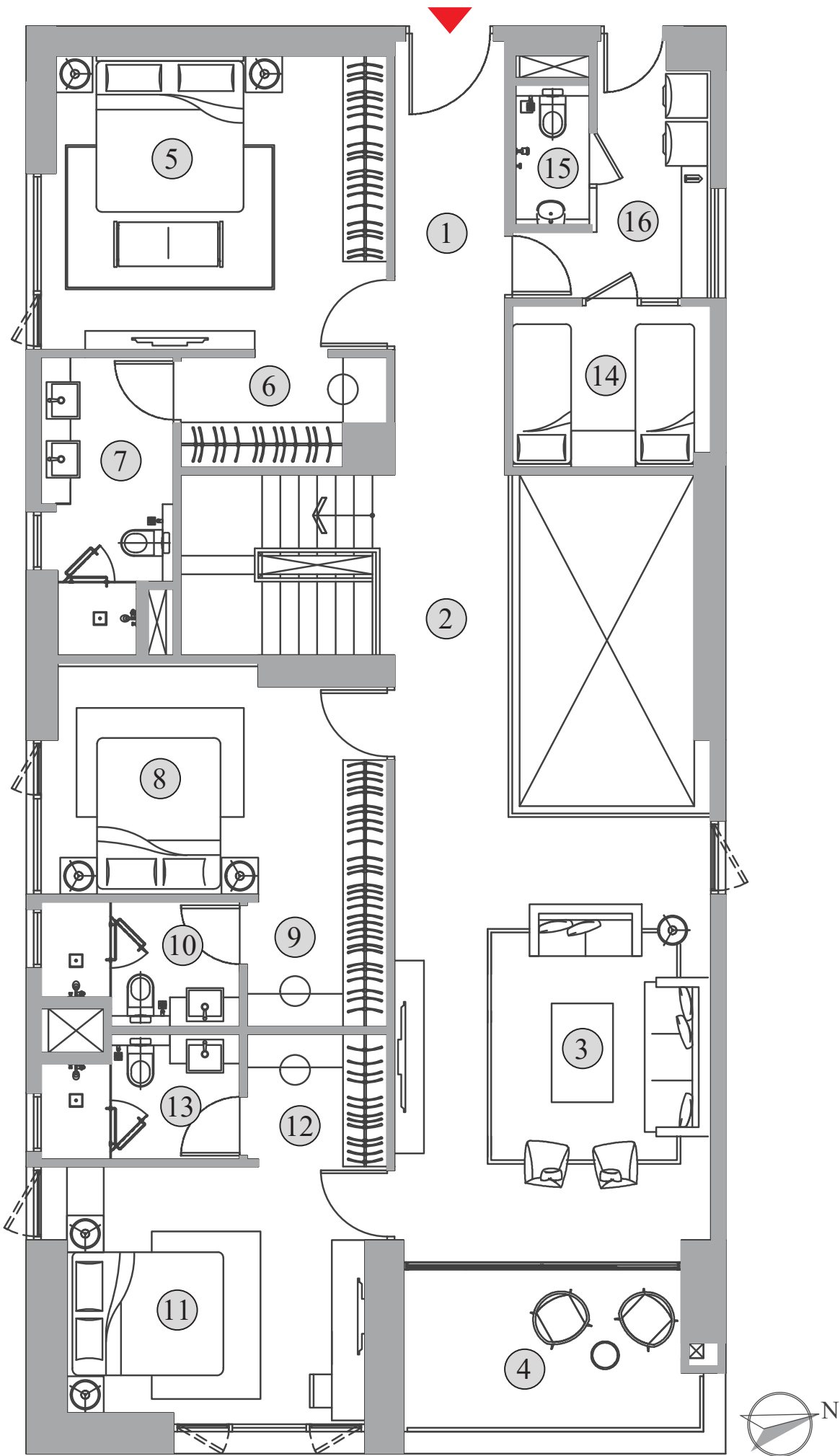
5 BHK DUPLEX (UPPER)

## Homes that nurture generations

The 5 BHK Duplex C Type at SANSARA is where luxury takes on a new dimension. Designed for large families, it offers a perfect space for staying connected across generations. The duplex layout creates a unique blend of formal and informal living areas, making it ideal for entertaining guests or sharing intimate family moments. Every detail has been thoughtfully designed to cater to your needs, reflecting your aspirations and achievements, while offering a lifestyle that is both grand and gracefully suited for all family members. With three open sides, this home invites plenty of fresh air and natural light, perfectly capturing the riverfront living experience. Thoughtfully designed with a Vaastu-compliant North-East entry, a cozy South-West master bedroom, and a practical North-West kitchen, every detail promotes a sense of harmony and well-being.



5 BHK DUPLEX (LOWER)



5 BHK DUPLEX (UPPER)

# Tower 2, Unit - C

## 5 BHK DUPLEX

|              |             |
|--------------|-------------|
| SBUA         | 4885 sq.ft. |
| BUA          | 3817 sq.ft. |
| Carpet Area  | 3107 sq.ft. |
| Balcony Area | 290 sq.ft.  |

### 5 BHK DUPLEX (LOWER)

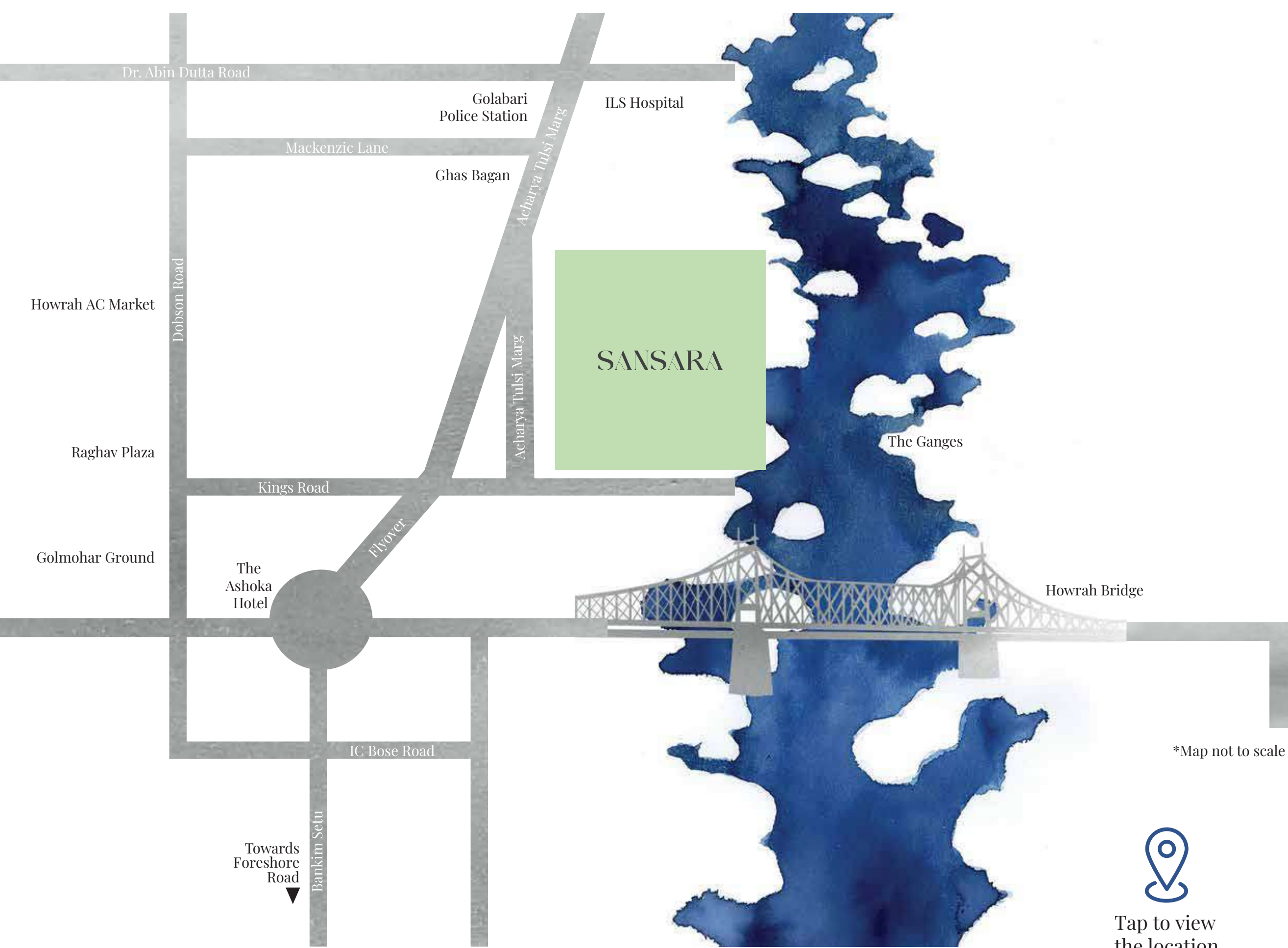
| No. | Space Type      | Dimensions (ft. Inch) | Area (sq.ft) |
|-----|-----------------|-----------------------|--------------|
| 1   | FOYER           | 4'11"x19'4"           | 1008         |
| 2   | DINING/ATRIUM   | 13'4"x14'9"           |              |
| 3   | FORMAL LIVING   | 14'1"x20'0"           |              |
| 4   | INFORMAL DINING | 15'9"x14'11"          |              |
| 5   | POWDER TOILET   | 3'5"x6'3"             |              |
| 6   | STORE           | 9'2"x4'1"             |              |
| 7   | STAIRCASE       | 3'7" wide             |              |
| 8   | BALCONY         | 14'4"x8'2"            |              |
| 9   | MASTER BEDROOM  | 15'5"x13'1"           | 306          |
| 10  | WALK-IN CLOSET  | 7'10"x4'11"           |              |
| 11  | TOILET 1        | 5'11"x13'3"           |              |
| 12  | BEDROOM 2       | 13'3"x11'6"           | 253          |
| 13  | WALK-IN CLOSET  | 6'3"x6'11"            |              |
| 14  | TOILET 2        | 8'10"x6'11"           |              |
| 15  | KITCHEN         | 8'10"x17'9"           | 133          |
| 16  | AC LEDGR        | 4'11"x9'6"            | 47           |

### 5 BHK DUPLEX (UPPER)

| NO. | Space Type      | Dimensions (Ft.Inch) | Area (sq.ft) |
|-----|-----------------|----------------------|--------------|
| 1   | FOYER           | 4'11"x19'4"          | 575          |
| 2   | PASSAGE         | 6'7"x14'9"           |              |
| 3   | LIVING          | 14'1"x20'0"          |              |
| 4   | BALCONY         | 14'4"x8'2"           |              |
| 5   | BEDROOM 3       | 15'5"x13'1"          | 310          |
| 6   | WALK-IN CLOSET  | 9'2"x4'11"           |              |
| 7   | TOILET 3        | 5'11"x13'3"          |              |
| 8   | BEDROOM 4       | 15'5"x10'4"          | 231          |
| 9   | WALK-IN CLOSET  | 6'3"x5'7"            |              |
| 10  | TOILET 4        | 8'10"x5'7"           |              |
| 11  | BEDROOM 5       | 13'3"x11'6"          | 237          |
| 12  | WALK-IN CLOSET  | 6'3"x5'7"            |              |
| 13  | TOILET 5        | 8'10"x5'7"           |              |
| 14  | HELPER'S ROOM   | 8'10"x7'3"           | 133          |
| 15  | HELPER'S TOILET | 3'3"x6'3"            |              |
| 16  | UTILITY YARD    | 5'1"x10'2"           |              |



# Location Map



## Schools

|                               |         |
|-------------------------------|---------|
| Lakshmipat Singhanian Academy | 9.9 Kms |
| La Martinier For Boys/ Girls  | 7.6 Kms |

## Healthcare

|                      |           |
|----------------------|-----------|
| ILS Hospital, Howrah | 350 Mtrs. |
| Belle Vue Clinic     | 7.1 Kms   |

## Club

|                            |         |
|----------------------------|---------|
| The Calcutta Swimming Club | 4.2 Kms |
| The Saturday Club          | 6.9 Kms |

## Shopping & Dining

|             |         |
|-------------|---------|
| Park Street | 5.7 Kms |
| Quest Mall  | 7.8 Kms |

## Business

|                     |         |
|---------------------|---------|
| Burrabazar          | 2.9 Kms |
| Calcutta High Court | 4.4 Kms |



Tap to view  
the location



# Crafted for Excellence

# Apartment

# Specifications

## Living, Dining, Foyer & Bedrooms


|               |   |
|---------------|---|
| Flooring      | Bare finish for all habitable spaces                                      |
| Wall Finish   | Putty   |
| Ceiling       | Putty   |
| Windows       | Aluminium windows   |
| Doors & Frame | Main door will be provided  |
| Electricals   | Tap off points/conduiting with DB<br>installted & modular boxes installed |

## Toilet

|                           |                           |
|---------------------------|---------------------------|
| Flooring                  | Anti-skid tiles           |
| Wall                      | Tiles up to false ceiling |
| Ceiling                   | False ceiling             |
| Windows                   | Aluminium windows         |
| Door                      | Will be provided          |
| Electricals               | Modular switches          |
| Sanitary &<br>CP fittings | Will be provided          |

## Kitchen

|             |  |
|-------------|--|
| Flooring    | Bare finish  |
| Wall        | Putty  |
| Ceiling     | Putty  |
| Windows     | Aluminium windows                                      |
| Electricals | Tap off points/conduiting &<br>modular boxes installed |





## Balcony

|                |  |
|----------------|--|
| Flooring       | Anti-skid tiles                              |
| Wall elevation | Painted to match exterior                    |
| Ceiling        | Paints with lights installed                 |
| Railing        | Glass railing designed to match the exterior |
| Door           | Will be provided                             |

## Yard

|                |                              |
|----------------|------------------------------|
| Flooring       | Anti-skid tiles              |
| Wall elevation | Painted to match exterior    |
| Ceiling        | Paints with lights installed |
| Railing        | MS/Aluminium railing         |
| Door           | Will be provided             |

## Servant's Room

|          |                  |
|----------|------------------|
| Flooring | Tiles            |
| Wall     | Putty            |
| Ceiling  | Putty            |
| Door     | Will be provided |

## Servant's Toilet

|                        |                           |
|------------------------|---------------------------|
| Flooring               | Anti-skid tiles           |
| Wall                   | Tiles up to false ceiling |
| Ceiling                | False ceiling             |
| Windows                | Aluminium windows         |
| Door                   | Will be provided          |
| Electricals            | Modular switches          |
| Sanitary & CP fittings | Will be provided          |

# In every Sansara Residence



Elegance blends with a sense of responsibility, creating a space that is not just visually stunning but also efficient and thoughtful. Designed with care and intention, each home supports mindful living, perfectly attuned to your needs and the environment.





# Green Features

## Water Conservation

Dual flushing system

Water recycling system

Rain water harvesting

Rain water storage tank with capacity of one-day fresh water requirement

Ground water recharge system

Water efficient Fixture

Water-monitoring system

Central vertical water distribution system

## Energy Conservation

Energy efficient lighting solutions

Driveway lights with timers

Use of solar power to reduce the monthly electricity consumption for common areas

Electric vehicle charging points in parking

Grid-tie Solar Power generation for uninterrupted power supply

## Solid Waste Management

Sewage treatment plant for recycling of waste water for gardening and flushing system

Segregation of organic and inorganic waste at source

Organic waste composter to recycle waste into natural fertilizers for plants



## Occupational Health

Building orientation planned for ample natural light and ventilation reduces use of luminaries and air conditioners

Low VOC paints prevent health hazards and indoor pollution

CFC free air-conditioners for a safe and cool environment

Use of native plants for landscape as it requires less water, fertilizers and maintenance

## Occupational Comfort

Water treatment plant

Wheelchair friendly common-area

Motion/heat sensors for all ground floor toilets

Exterior paints and roof tiles with high solar-reflective-index

Defined pedestrian-walk for joggers and walkers





# Other Features

## Safety & Security

Boom barriers at premises entrances/exits

IP based CCTV surveillance

Security cabin at premises entry

## Fire Safety

Fire rated door at fire escape staircase

Addressable fire detection system to detect and warn people

Fire hydrant system in common areas for all around access

Manual call points with hooters in common areas

Smoke detectors & sprinkler system in all floors

## Services

Three passenger elevators & one service elevator per core

100% DG backup for lighting circuits, lifts and utilities in common areas

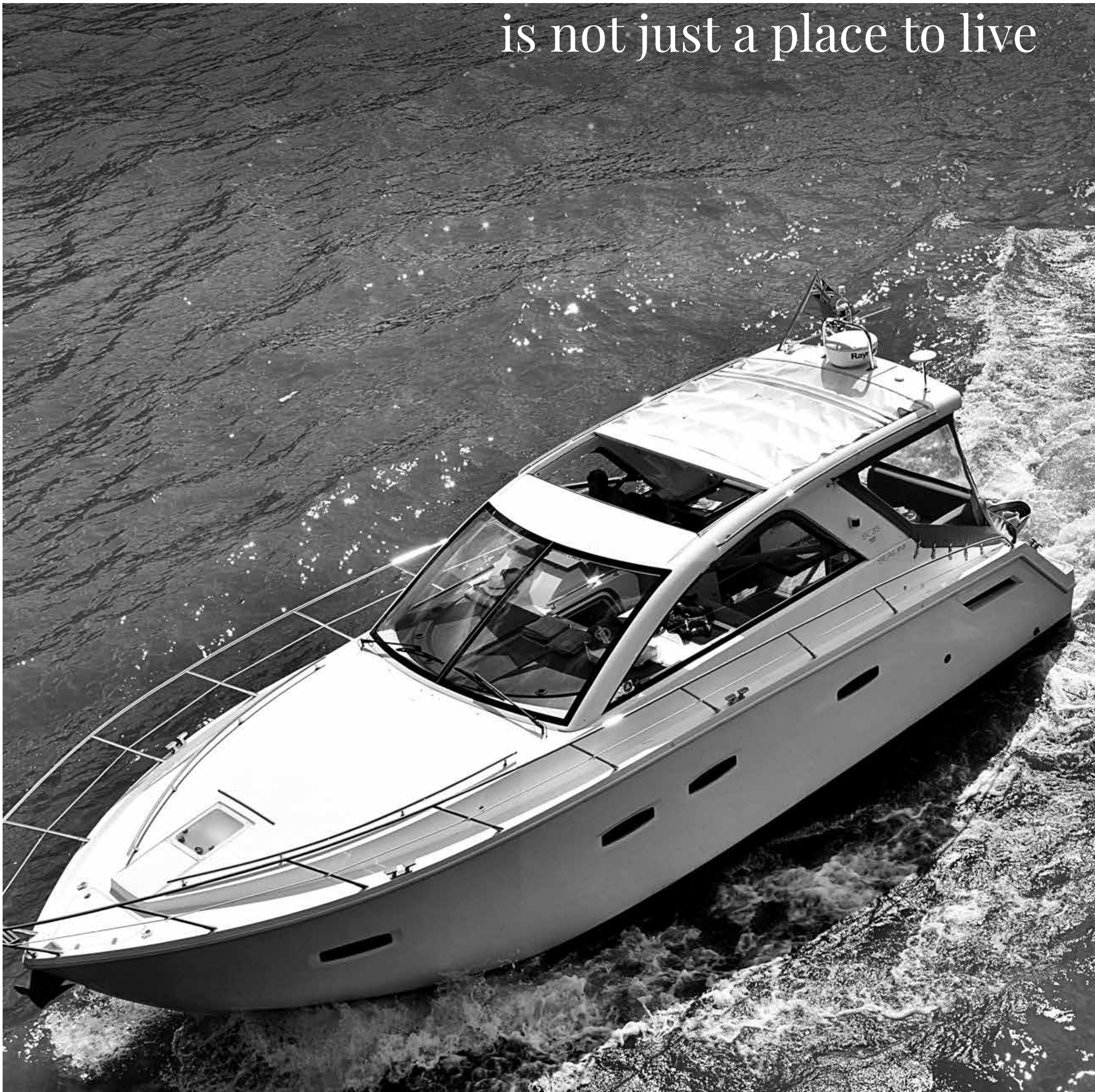
Visitor's car parking facility

DG power back up for apartments at additional cost

Accessing multiple internet providers in a residential complex (GPON)

# SANSARA

is not just a place to live



it's a thoughtfully designed  
world of its own, where  
luxury and sustainability  
co-exist effortlessly.

# SANSARA

## Riverfront Luxury Residences

### SITE ADDRESS

1 Acharya Tulsi Marg, Howrah 711 101

Developed by:



**It's Familytime**

4 Decades | 150+ Completed Projects

10+ Green Projects under Development | 15,000+ Happy Residents



### CORPORATE OFFICE

1002 EM Bypass, Kolkata 700105

Call 033 6767 6785 to know more

Disclaimer: This document is merely conceptual in nature and is to be used for general information purpose only. All information mentioned in this document is for representative purpose only. Any interested party should verify all the information mentioned in this document independently with the Developer prior to making any decision for buying any property in the Housing Project. The user of this document shall be deemed to have confirmed that he/she has not relied on any information contained herein while making any booking/purchase in the Project of the Developer